

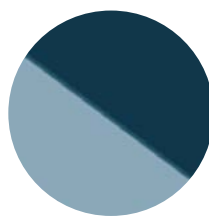
Compact Laminate

Compact laminate is made of special paper compressed into a firm tabletop in the process of high pressure and heat. We only use certified compact laminate of the highest quality, which our craftsmen carefully select for Bølling Tray Table. Each side of the compact laminate has a different colour. Each colour combination is selected to suit all the types of wood we use for Bølling Tray Table.



BASE

The classic model with Black and White trays has been discretely adjusted for softer contrast and a bit of warmth.



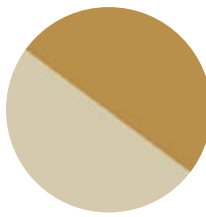
WATER

A deep marine Blue note that, like an anchor, brings calm and soothing tones to any context. On the reverse side of Water, is a brighter airy Blue, that uplifts with light contrast and tone-in-tone variation.



STONE

Two classic shades of slightly warm Grey, that will complement most settings. Each side of Stone has its own light and dark grey. In combination they bring subtle and soft contrasts.



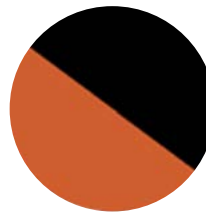
SUNNY

The warm Ochre Yellow is a reminiscent of ancient pigment colours, yet with vibrant energy. On the other side of the reversible tray, Sunny has a light creamy tone, that adds contrast and variation.



EARTH

A light caramel Beige that perfectly matches the natural tones of the oakwood frame, and comes across as monochrome, warm and modern. On the other side of the reversible tray, Earth has a dark chocolate Brown.



CLAY

This vibrant burnt Orange has classic notes of terracotta and cognac leather, both complementing and uplifting its interior context. On the other side of the tray, Clays has an off-Black.



LEAF

Two shades of green make up the Leaf colourway. On one side of the tray is a deep dark moss-like Green, and on the other; a lighter olive Green. In combination, the two greens complement each other with soft contrast.



RED

The warm red and black provide a classic contrast and variation that both complementing and uplifting its interior context.

